

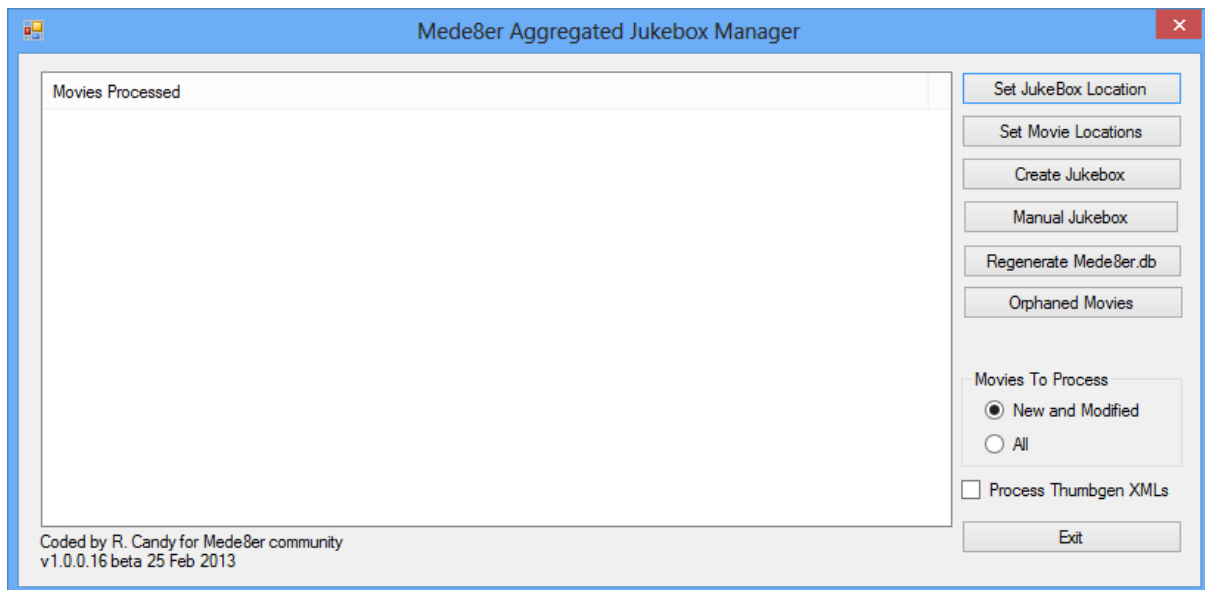
Mede8er Aggregated Jukebox Manager Guide

Version 2.0 of the firmware for the Mede8er 1000x3D and 600x3D introduced the facility to support an aggregated jukebox. An aggregated jukebox provides a single video wall for your movies regardless of which drive and/or network share they are located on.

The aggregated jukebox works by having the meta-data (movie-name.XML, about.jpg and folder.jpg) for each movie located in a subdirectory for each movie in a single location. This location is separate from the location(s) in which the movie is located. The movie-name.XML file then needs to have a <filelink> tag inserted into it to point back to the original movie location. When the Mede8er tries to play a film from the aggregated jukebox it realises that there is no film in the directory and follows the path information from the <filelink> tag to play the movie.

When the version 2.0 firmware was originally put into beta the only tools that supported the creation of an aggregated jukebox were Yadis and Yadis2Mede8er.

I created the Mede8er Aggregated Jukebox Manager (MAJM) as I preferred to use MyMovies as my scraper. For clarity MAJM does not perform any scraping itself. It consolidates, copies and edits meta-data from other scrapers into a single directory structure to allow the user to produce an aggregated jukebox. Since MAJM has been made available to the Mede8er community it has been confirmed to work with meta-data generated by MyMovies, Yadis and Thumbgen. In theory it should work with any scraper that generates Mede8er compatible meta-data and images.



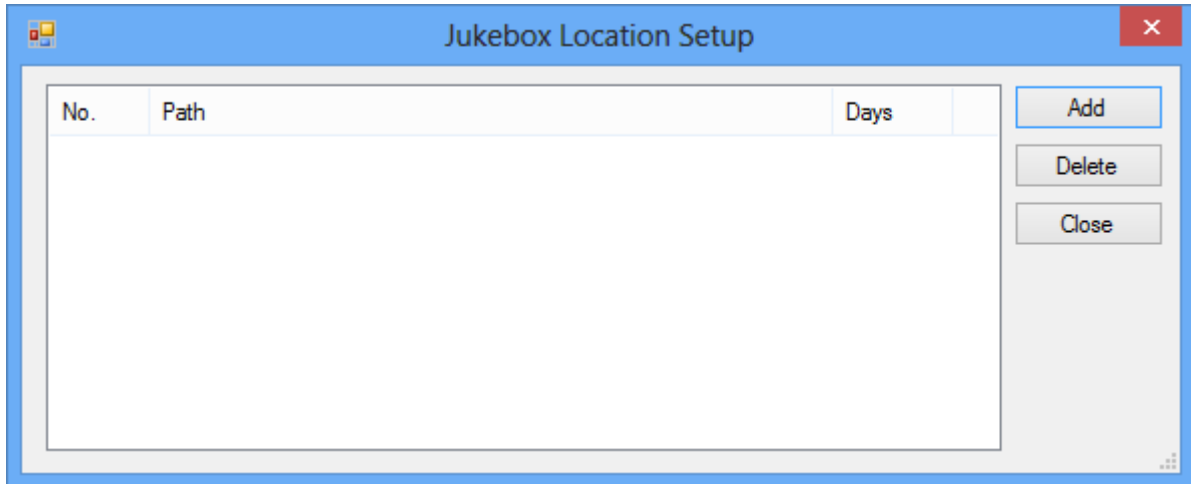
MAJM Main Screen

For MAMJ to work you need to supply it with several pieces of information

- 1) The location of your jukebox. It is recommend that this is a location away from your movies. It could be on a network share, a USB drive, an SD card. Anywhere that the Mede8er has access to
- 2) The locations of your movies

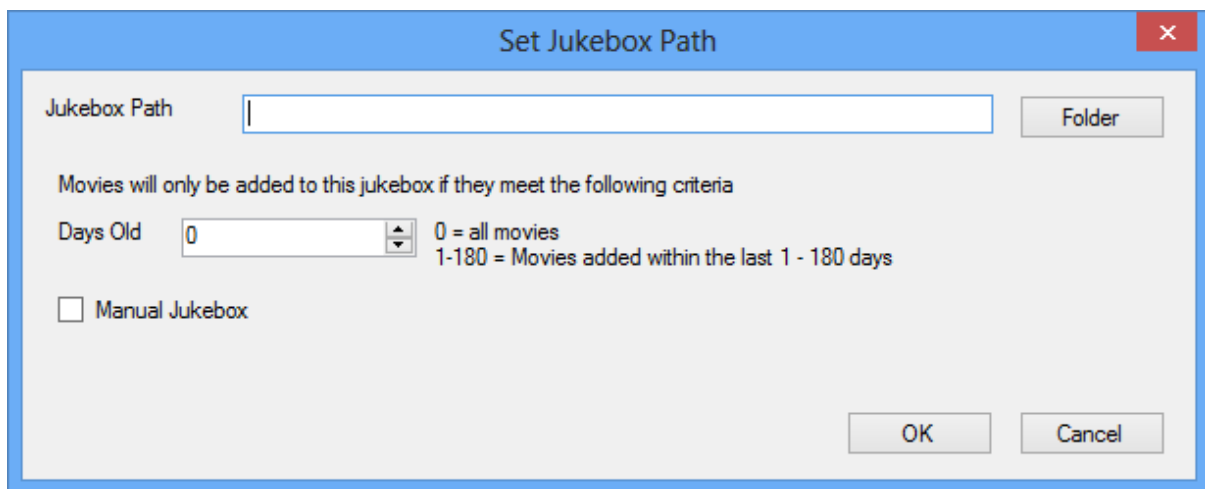
MAMJ actually allows you to create multiple jukeboxes. For the purpose of this walk through we will concentrate on just one jukebox. The setup and use of multiple jukeboxes is covered towards the end of the guide

To specify your jukebox location click on the **Set JukeBox Location** button.

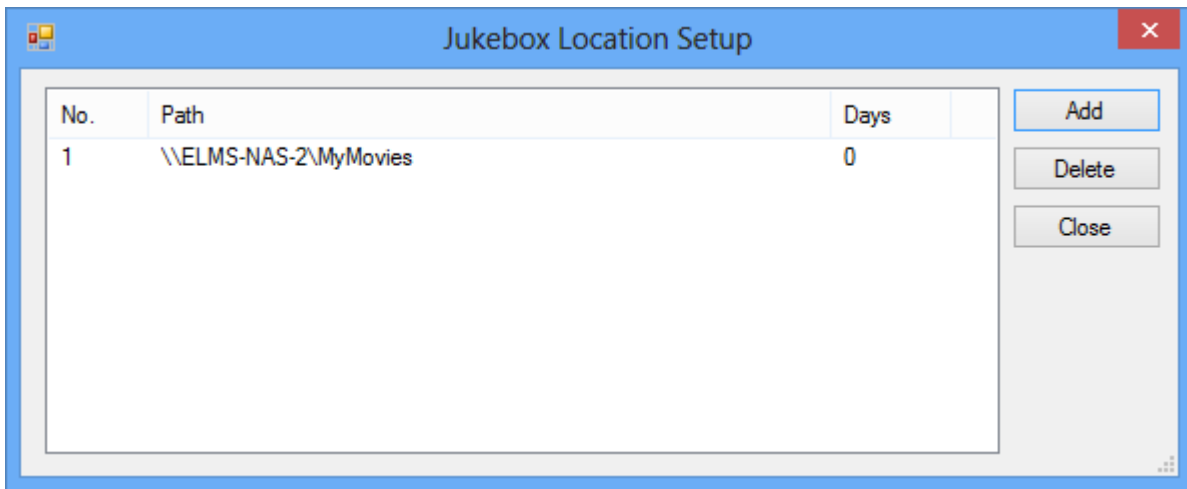


Jukebox Location Setup

Click on the **Add** button

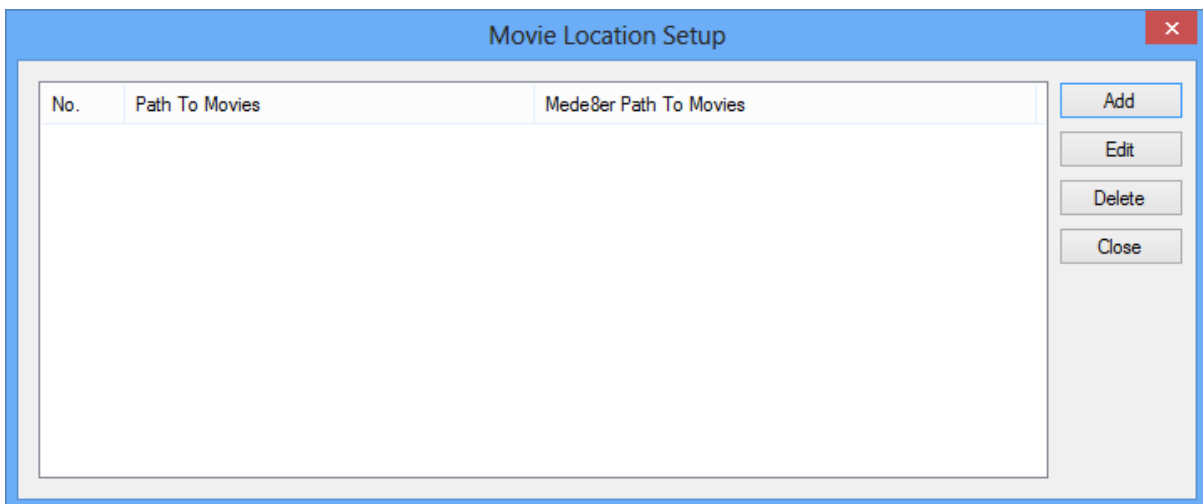


You can either type in the path to your jukebox or select it by clicking on the **Folder** button. For most people using the Folder button with the Folder Browser dialog that appears is the easiest way. For this first walk through ignore the Days Old and Manual Jukebox settings, I will discuss those later. With your Jukebox Path set click on **OK**

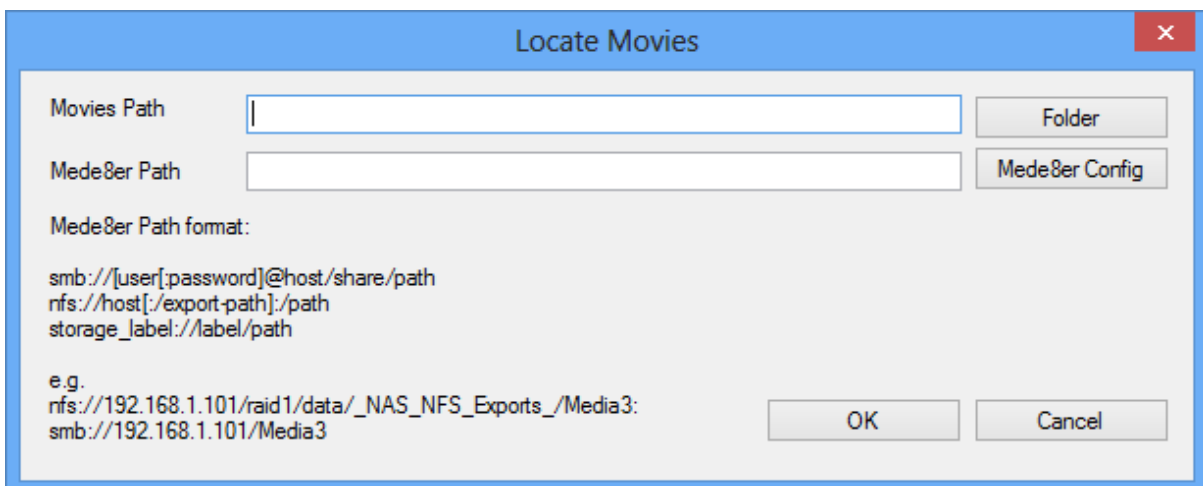


You are now back at the Jukebox Location Setup screen with your first jukebox specified. Click **close** to return to the main screen.

The next step is to specify where your movies are located. Each location (drive or network share) that contains your movies needs to be specified separately. To specify your first location click on the **Set Movie Locations** button.



On the Movie Location Setup screen press the **Add** button



The program needs to know two pieces of information for each movie location.

- 1) The path to your movies. This is the path from the PC that you are running MAJM on. You can either type in the path if you know it or click on the **Folder** button to navigate to it. You must point to the directory immediately above your movies. So if your movies are stored on your E drive in subdirectories beneath a directory called Movies e.g.

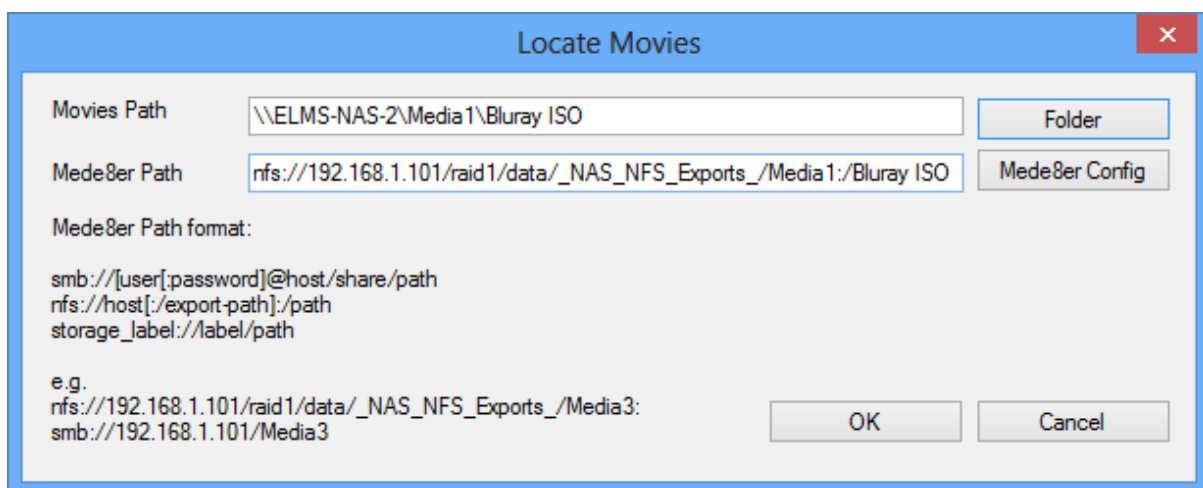
E:\Movies\Dark Knight

E:\Movies\Shawshank Redemption

E:\Movies\Wrestler

Then you must navigate to the Movies directory so that the entry in the Movies path box looks like **E:\Movies**

- 2) The Mede8er path. This is the path that the Mede8er will use to access the movies. This needs to be a network path or a storage label path and needs to be specified in a very particular format. Page 1 of the MAMJ topic on the Mede8er forum (<http://www.mede8erforum.com/index.php/topic,10490.0.html>) has details on this format. In addition MAMJ will help you discover the correct path by analysing a back copy of the Mede8er config. See the section at the end of this guide called **Using MAJM To Analyse The Mede8er.CFG for Mede8er Path Information** for more details on how to use this. It is vital that you get the correct path here. This information gets written to the movie XML files and is used by your Mede8er to locate the film. If you get this wrong then the Mede8er will not find your movies. I would suggest, unless you are comfortable with specifying the Mede8er path, that initially you just add ONE movie location to the jukebox and check that you have everything working as expected before adding new movie location

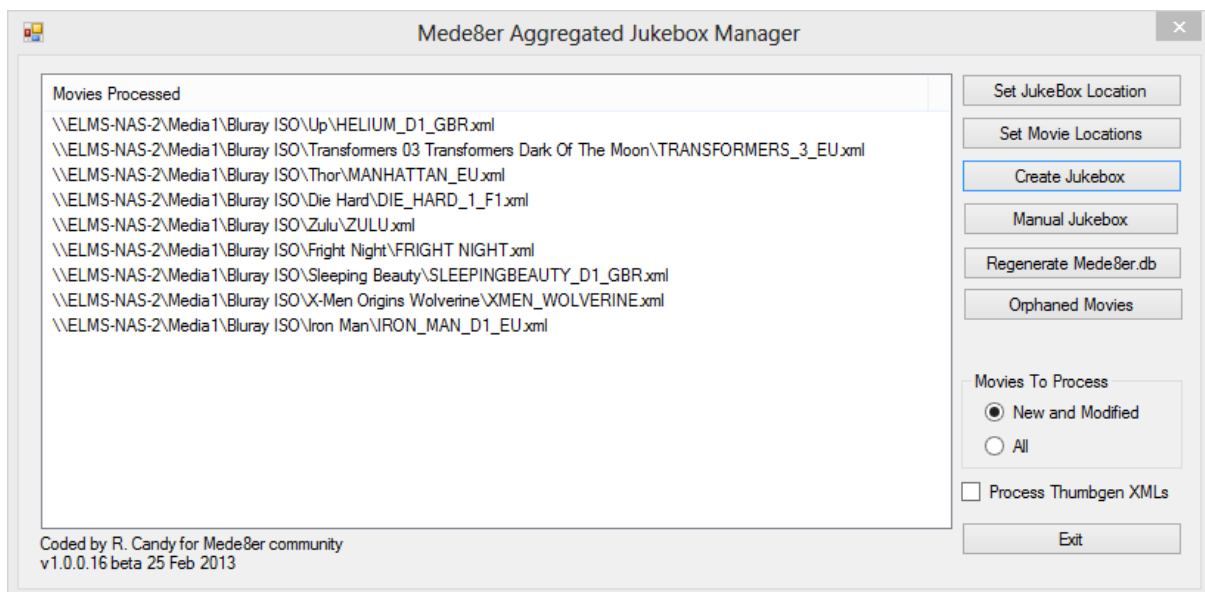


Example of completed Movie location using an NFS share

With your movie location completed click **OK**. You will be returned to the Movie Location screen. Keep adding additional movie locations until you have specified all the locations that you wish to aggregate.

With your Jukebox and Movie locations specified you are ready to create your aggregated Jukebox. NOTE: If your movies were scraped using Thumbgen please put a tick in the **Process Thumbgen XMLs** box on the MAJM main screen.

To create your Jukebox click on the **Create Jukebox** button. With this clicked MAJM will start searching your movie locations for Mede8er friendly meta-data. Whenever it finds an about.jpg, folder.jpg and movie-name.xml file it will copy these to the specified jukebox location. Once copied it will amend the copy of the movie-name.xml file to insert the <filelink> information. Whenever MAJM finds Mede8er meta-data it will update the display to show which movie it is processing. The length of time it takes to create your jukebox depends on the number of movies and the speed of your network/drives. If your collection runs into 100s of films the initial jukebox creation can take sometime



MAMJ Creating a Jukebox

A message will be displayed when MAMJ has finished created the Jukebox. You now need to add this location as a favourite within your Mede8er.

Things to check: To get a 3 line jukebox on the Mede8er you need to set the Jukebox View to On (this is located on the Setup screen within the Misc settings section). Also make sure that you have selected the Hide Movie Info option (go into your jukebox, press the Menu button on your remote and select the Hide Movie Info option).

Now test playing back some films. If your films are appearing correctly in your jukebox but are not playing then the most likely reason is incorrect path information specified for the Mede8er path on the **Set Movie Locations** screen.

Additional Features

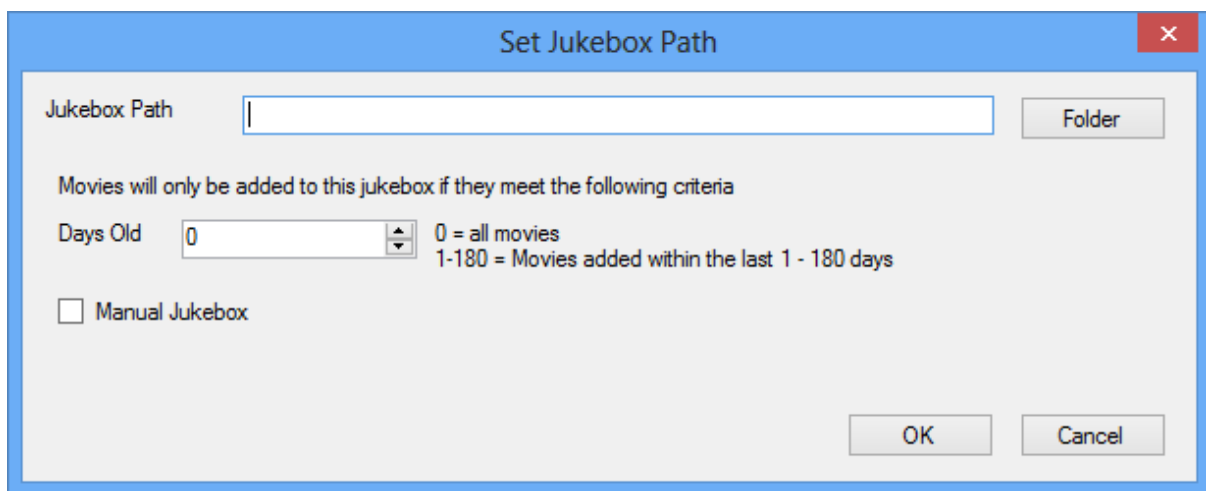
- Creation / updating of the Mede8er.db file. Your Mede8er uses its own database for basic searching and including films in a jukebox. This database is updated when you use the Scan Folder option on a folder in your favourites. MAJM creates the Mede8er.db file on the aggregated jukebox and updates it whenever you run MAJM so you don't need to run Scan Folder on the Mede8er
- Process new/updated films only. The MAJM main screen includes options to process All movies or just New and Modified ones (modified means that the movie-name.xml file has been updated). This dramatically cuts down on processing times for subsequent runs. Please note that whenever you add a jukebox or movie location the program will always scan against All movies the next time it is run regardless of the setting in the Movies To Process option
- Command line option. If you launch the program the with the **-auto** argument it will automatically start scanning your movie locations for new/updated movies. You could use this option in conjunction with Windows Task Scheduler to automatically update your jukebox on a schedule of your choosing
- Orphaned Movies. Because the aggregated jukebox separates movie meta-data from the movie file(s) there is a possibility if you delete a movie that it will continue to appear in your jukebox. The Orphaned Movies button will scan your jukebox and your movie locations and display a list of movies that it has found in the jukebox but are not present in your movie locations. You can choose to delete the movie meta-data by selecting the movie and pressing the delete button.

Support For Multiple Jukeboxes

MAJM allows you to setup more than one jukebox. I added this facility as there were two requirements that I had for my personal setup that I wanted to be able to cope with

- 1) In addition to my main jukebox with all my films in it I wanted to have a separate jukebox that only contained movies that I had added to my system in the last 60 days. This was to be my New Movies jukebox. I wanted movies to automatically drop out of this jukebox as soon as they were older than 60 days
- 2) I wanted a manual jukebox. This was for use by my children and I wanted to be able to specify which movies should be available in this jukebox.

MAJM allows you to achieve both of the above relatively easily. Either option needs you to make changes in the Set Jukebox Path screen.

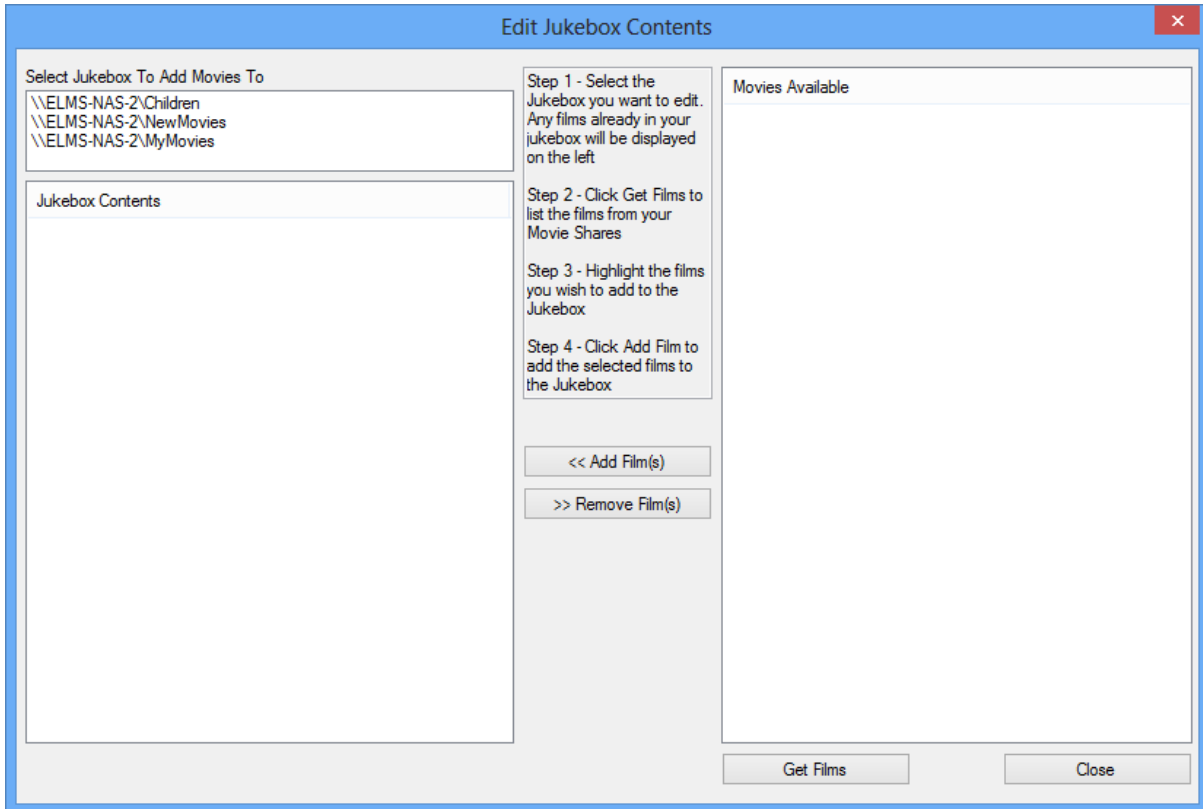


For option 1 specify a number in the Days Old field. Any number greater than 0 means that the jukebox should only contain movies that have been added to your system within the specified number of days. E.g. a value of 60 means that the jukebox shouldn't contain movies that are more than 60 days old. The program calculates the age of a movie by looking at the creation date of the folder in which it resides. Whenever you run MAJM if it finds a movie that is older than the specified age in the jukebox it will remove it (it only removes meta-data, your original movie is untouched). If you are using this option it is good to use it in conjunction with the `-auto` command line and Windows Task Scheduler so that your jukebox is updated every day.

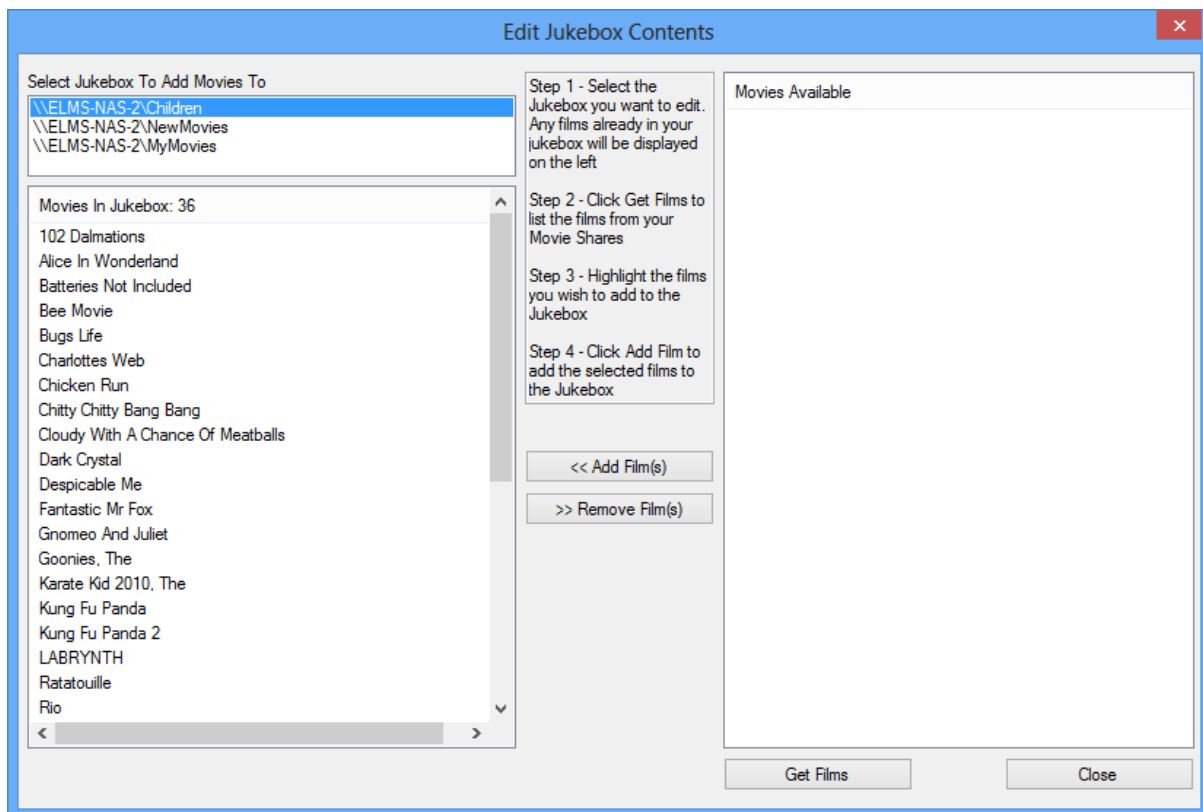
For option 2 just put a tick on the Manual Jukebox field. Movies will not get assigned to that jukebox unless you select them using the **Edit Jukebox Contents** screen

Setting Up a Manual Jukebox

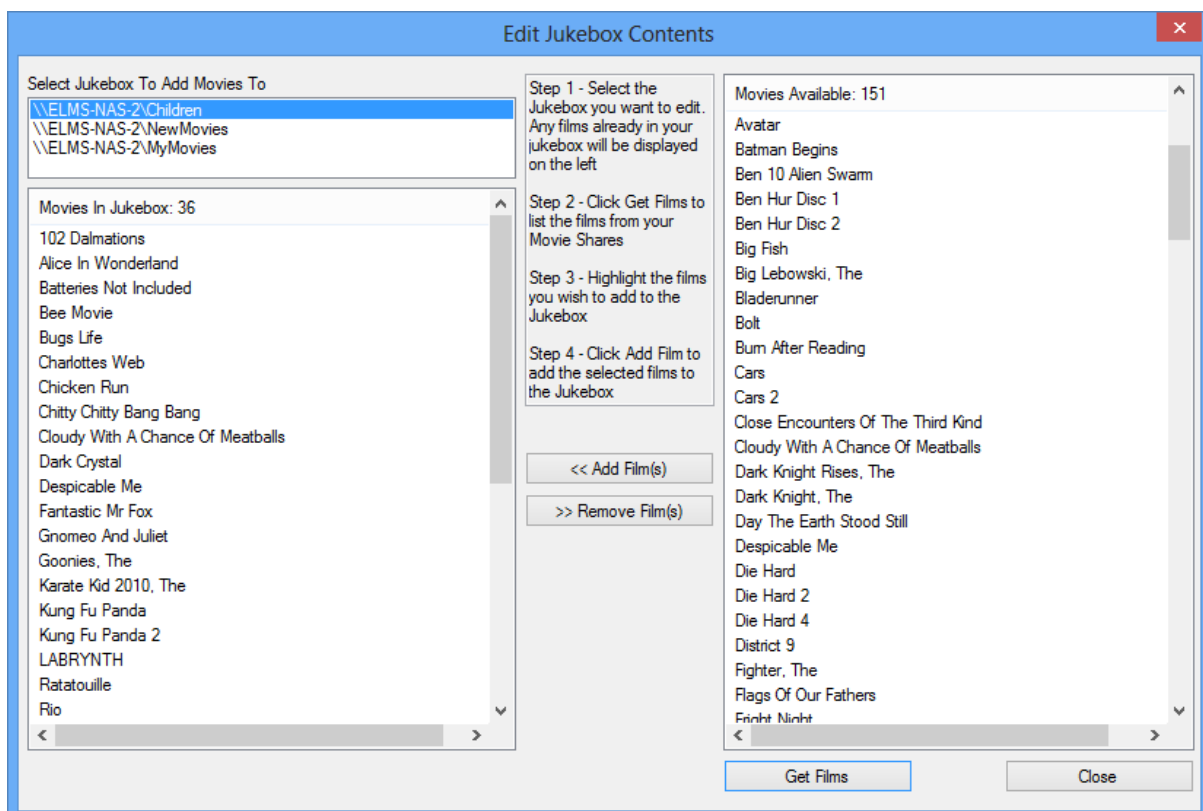
You can edit the contents of any jukebox specified in MAJM by using the **Edit Jukebox Contents** screen. This is accessed from within the main screen in MAJM by clicking on the **Manual Jukebox** button.



The Edit Jukebox Contents screen is split into 3 areas. In the top left of the screen is a list of jukeboxes that you have defined within MAJM. Click on one of the entries to see the contents of that jukebox.



Now click on the **Get Films** button. This retrieves all the films from your specified movie locations. Depending on the size of your collection this may take a while to populate.



Highlight the films you want to copy to the jukebox (you can use CTRL + mouse click to select multiple films) then click the << **Add Film(s)** button. This will copy the meta-data for the selected movies across to your jukebox. If you wish to remove a movie from the jukebox then highlight it in the Movies In Jukebox list and press the >> **Remove Film(s)** button.

You can edit the contents of any jukebox not just manual ones but be aware that if you run use the Create Jukebox button with the Movies To Process All option it will probably add back in any movies that you have removed.

Using MAJM To Analyse The Mede8er.CFG for Mede8er Path Information

One of the areas that people seem to struggle with when setting up the Aggregated Jukebox is getting the correct path information that the Mede8er needs. This seems to be harder for people who are sharing their drives via NFS.

The Mede8er Aggregated Jukebox Manager requires you to specify the places that your movies are located in one at a time. For each location you have to specify two pieces of information

- 1) The path to where the movies can be found by the program
- 2) The path that the Mede8er will use to find the same movies.

The program helps you with point 1) as it has a folder browser dialog and you just navigate to the folder that contains your movies. Previous versions of the program didn't help with point 2 and required you to type this information in. If you knew your network well then this probably wasn't too difficult but looking at posts on the forum this seems to be the area that most people are struggling with when getting the aggregated jukebox working.

The Mede8er Aggregated Jukebox Manager has been expanded with a feature that will help you work out the correct path information. At the moment this help is limited to NFS shares and Samba shares that don't require a password. I will look at USB and password protected samba shares at a future date.

Being honest this is a bit of a workaround and relies on the program analysing a backup of the Mede8er config file but it does seem to work and will save some people hours of wasted effort.

You will need a USB stick to do this. You will also need to add some temporary jukeboxes to your favourites.

Instructions

- 1) Add each of the jukeboxes that you wish to aggregate to your favourites
- 2) Go into each of the jukeboxes that you have added to your favourites to check that you can see films in them. If you can't then there is no point going any further.
- 3) Turn on the Samba process on your Mede8er. This is on the settings menu
- 4) Insert your USB stick into the Host Port of your Mede8er. On the 1000x3D this is the lower of the two USB ports
- 5) Go into the setup menu on your Mede8er and choose the Save Config option.

You've now finished with your Mede8er for the time being. Start up the Mede8er Aggregated Jukebox Manager on your PC. You must be using version 1.0.0.16 or greater.

- 1) Click on the Set Movie Location button
- 2) You can either now edit an existing location or choose to add a new one.
- 3) Regardless of which option you choose the Locate Movies dialog will be displayed.
- 4) Click on the Mede8er Config button.
- 5) A new screen will appear. Click on the Locate Config button
- 6) A standard Windows Open File dialog will appear. You now need to navigate to the Mede8er.CFG file that is located on the USB stick plugged into your Mede8er. By default

your Mede8er is called X3D unless you have renamed it. Navigate to the USB stick on the Mede8er and select the Mede8er.CFG file. If you really struggle with this you could always plug the USB stick into your computer and navigate to that instead. The important point is that the Mede8er.CFG is saved to the USB stick

- 7) The Mede8er config file screen will now display a path for each of your favourites that you have setup on your Mede8er
- 8) Click on a path in the list and then click the Use button
- 9) You will be returned to the Locate Movies screen with the Mede8er Path field completed for you.
- 10) You now need to click on the Folder button and navigate to the movies folder for the Mede8er Path that you have just added.

That's each. Just repeat adding Movie Locations to the program until you have added all the locations that you wish to aggregate.

The favourites that you added to your Mede8er at the start of this process can now be removed unless you want to keep them.